

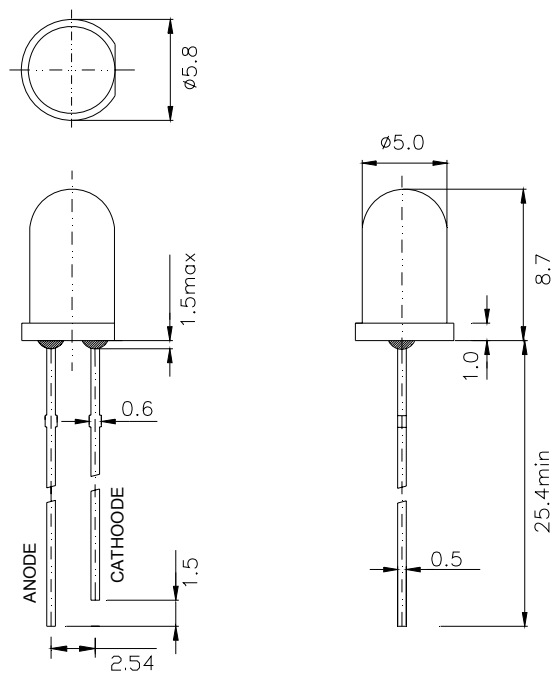
PRODUCT SPECIFICATION

Descriptions:

- 5mm Round Type
- Emitting Color: blue
- Viewing Angle: 30°
- No Stopper

CUSTOMER APPROVED SIGNATURES

■ Package Dimensions



■ FEATURES

- ◆ Highlight output at low currents
- ◆ Low power consumption
- ◆ Low current requirements
- ◆ Reliable and rugged
- ◆ Low current $I_F=20\text{mA}$ operating

■ APPLICATIONS

- ◆ Toys
- ◆ Lighting switches
- ◆ Automotive
- ◆ Commercial Outdoor Advertising
- ◆ Front Panel Indicator

Material	Lens Color	Source Color
InGaN	Water Clear	Blue

Notes:

1. All dimensions in mm tolerance are $\pm 0.2\text{mm}$ unless otherwise noted.
2. An epoxy meniscus may extend about 1.5mm down the leads.
3. Burr around bottom of epoxy may be 0.5mm max.

■ Absolute Maximum Ratings (Ta = 25°C)

Items	Symbol	Absolute maximum Rating	Unit
Power Dissipation	P _D	100	mW
Forward Current(DC) *2	I _F	30	mA
Peak Forward Current*1	I _{FP}	100	mA
Operation Temperature	T _{opr}	-40 ~ +85	°C
Storage Temperature	T _{stg}	-40 ~ +100	°C
Lead Soldering Temperature	T _{sol}	Max.260°C for 5 sec Max. (3mm from the base of the epoxy bulb)	

*1Pulse width ≤ 0.1 msec duty $\leq 1/10$

*2For long term performance the drive currents between 10mA and 20mA are recommended. Please contact sales representative for more information on recommended drive conditions

■ Typical Electrical & Optical Characteristics (Ta = 25°C)

Items	Symbol	Condition	Min.	Type.	Max.	Unit
Forward Voltage	V _F	I _F = 20mA	2.8	3.2	3.6	V
Reverse Current	I _R	V _R = 5V	---	---	10	μA
Dominant Wavelength	λ _D	I _F = 20mA	460		470	nm
Luminous Intensity	I _V	I _F = 20mA	4000	□	6000	mcd
50% Power Angle	2θ _{1/2}	I _F = 20mA	---	30	---	Deg

■ Notes:

1. Tolerance of measurement of luminous intensity : ±15%
2. Tolerance of measurement of dominant wavelength : ±1.0nm
3. Tolerance of measurement of forward voltage : ±0.1V
4. θ_{1/2} is the off-axis angle at which the luminous intensity is half the axial luminous intensity