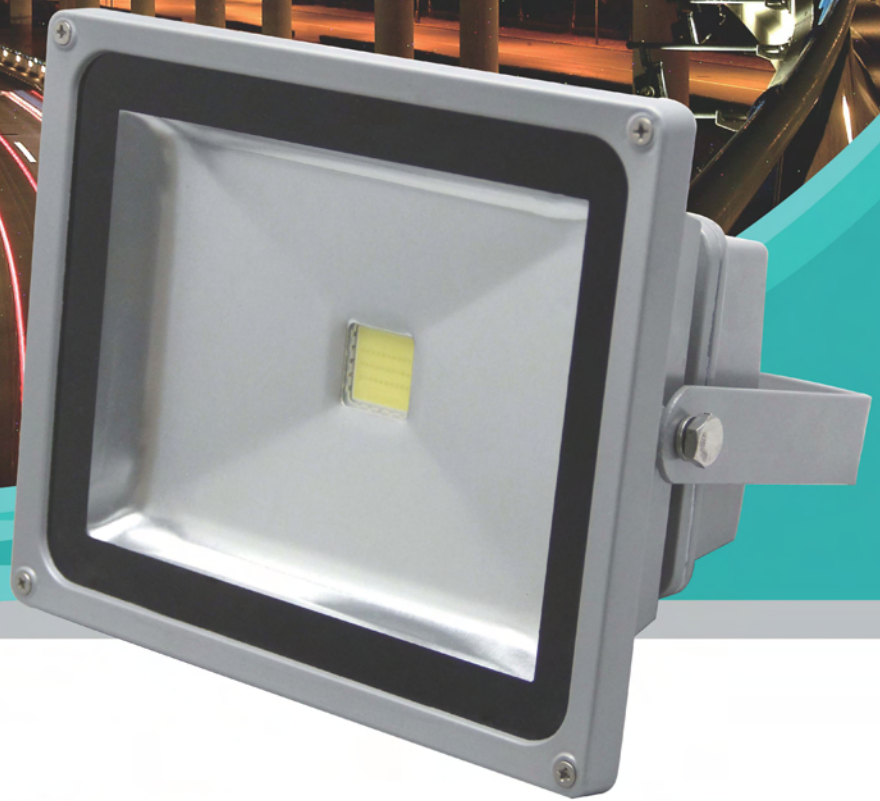


# DEMASLED

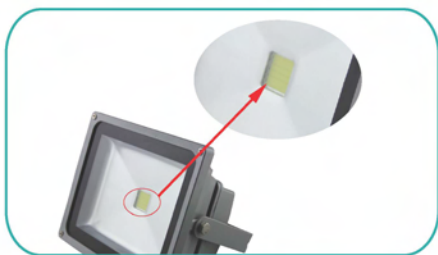
## UL led flood light



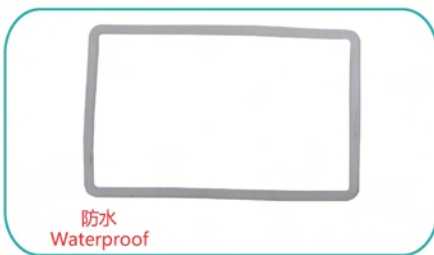
# DEMASLED

## Features

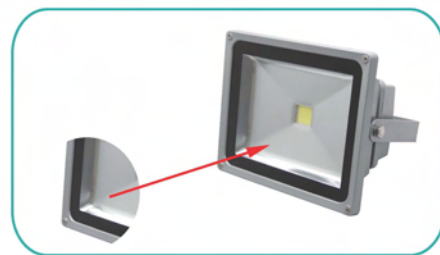
High performance COB LED



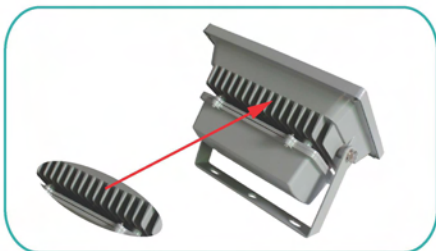
Protection level reaches to IP65,  
Insulation Class: CLASS 1



Toughened glass, light transmittance  
over 93%



high quality aluminum alloy with high  
thermal conductivity, long life span



LED driver efficiency more than 85% ,  
PF>0.9, AC100-277V



UL/cUL (E468007), 3 years' warranty  
Easy to use and simple to install



## Parameters

Part No.	Size (L*W*H)	Wattage	Lumen	Voltage	Housing color	Color temperature
TL05	115*100*86mm	10W	≥650lm	AC100-277V	Grey & Black	C W : 5750±250K N W : 4000±200K W W : 3000±100K
TL01	195*165*145mm	20W	≥1300lm			
TL02	195*165*145mm	30W	≥1950lm			
TL03	290*240*175mm	50W	≥3500lm			
TL09	380*290*115mm	70W	≥4900lm			
TL10	380*290*115mm	100W	≥7000lm			

## Package

Part No.	Carton (L*W*H)	PCS/ carton	N.W (kg)/pcs	G.W (kg) /carton	CBM (m3)/ carton	20 GP (5.69M× 2.13M×2.18M)	40 GP(11.8M× 2.13M×2.18M)
TL05(10W)	360*260*425mm	24	0.6	16.5	0.056	10272pcs @ 428 cartons	21840pcs @ 910 cartons
TL01(20W)	475*395*250mm	12	1.13	16	0.048	6000pcs @ 500 cartons	12744pcs @ 1062 cartons
TL02(30W)	480*410*430mm	12	2.11	29.5	0.085	3384pcs @ 282 cartons	7200pcs @ 600 cartons
TL03(50W)	620*330*525mm	8	2.8	27	0.112	1712pcs @ 214 cartons	3640pcs @ 455 cartons
TL09(70W)	510*330*420mm	4	4.94	25	0.071	1352pcs @ 338 cartons	2872pcs @ 718 cartons
TL10(100W)	510*330*420mm	4	6	28.6	0.072	1352pcs @ 338 cartons	2872pcs @ 718 cartons

## Application

For outdoor use, such as Factories, gymnasiums, yards, advertising boards, buildings, lawns, garden designs and so on.