

## BI/B2 Billboard Arm Installation Instruction

### Pre-Installation Considerations

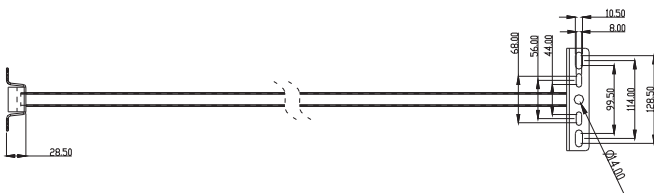
- Unpack and check the product carefully.
- Should the product be found damaged in any way, please keep the product in the packaging and contact the dealer.
- Please do not attempt to use a damaged product.
- The product should be installed by a qualified electrician.
- The product should not be disassembled, maintained by Non-Professionals; or the warranty will be void.
- All the floodlights during installation and in use should not be positioned with glass cover facing vertically upwards.

ID:B 1: FL10W / FL20W / FL30W / FL50W

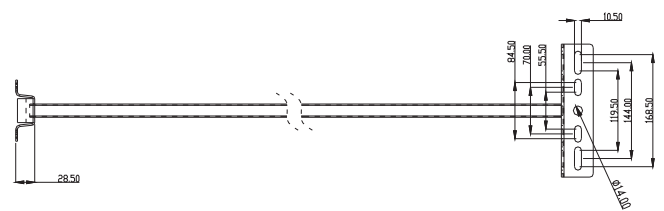
ID:B 2: FL80W / FL100W / FL120W / FL150W / FL200W



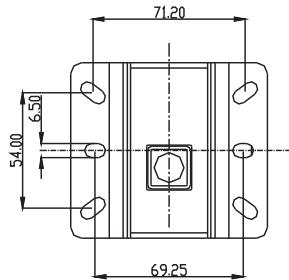
### 1. Installation Dimensions (Unit: mm)



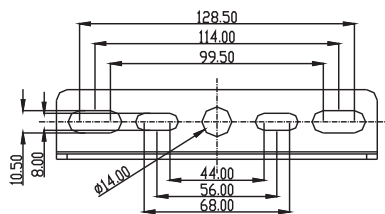
BR-FLAC-B1



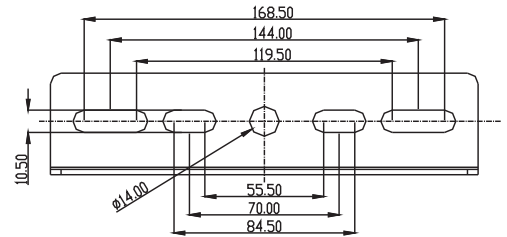
BR-FLAC-B2



Base

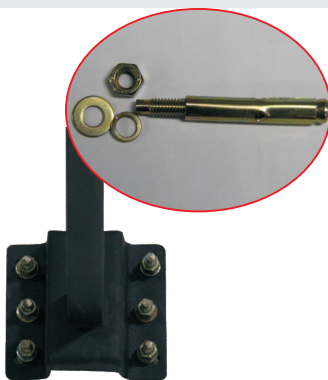


BR-FLAC-B1



BR-FLAC-B2

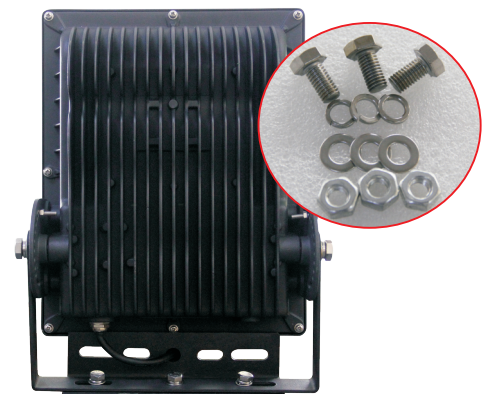
### 2. Installation and use



Wall Mounting



Steel Plate Mounting



**Wall Mounting:** At the setting area, bore a hole according to Base Drawing with a 6mm diameter drill, and put Anchor Bolt of M6 in the hole of the wall, and then fix the arm with screw nut.

**Steel Plate Mounting:** At the setting area, bore a hole according to Base Drawing with a 6mm diameter drill, and put Anchor Bolt of M6 in the hole of the steel plate, and then fix the arm with screw nut.

**Remark:** 10w matches M6 anchor bolt, 20w-50w match M8, and 70w-200w match M10.

### 3. Attention

- Please turn off the power supply before installation or changing assembly parts.
- The input voltage and the lamp should be adapted. After connecting the power line, please make sure the wiring section is insulated.
- Non-professionals, must not install or dismantle the lamps.
- All the floodlights during installation and in use should not be put with glass cover vertically upside.