

DEMASLED

Use high brightness COB LED as light source, constant current at low voltage.

Use high heat conduction aluminum alloy as material of lamp body, surface coating with high radiating material at static condition.

Reasonable structure, good at cooling, waterproof, dustproof and so on.

Installed by screw, easily and firmly.

Use Infrared remote control to change the color. Mainly apply for outdoor lighting projects.



Parameter:

LED type: COB

Power :50W

Dimension:290×240× 160 mm

Input voltage(V): 85~265V

AC Power efficiency: ≥85%

Frequency: 47 ~63Hz

Light failure:<3% within 3000Hrs

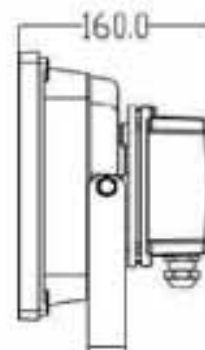
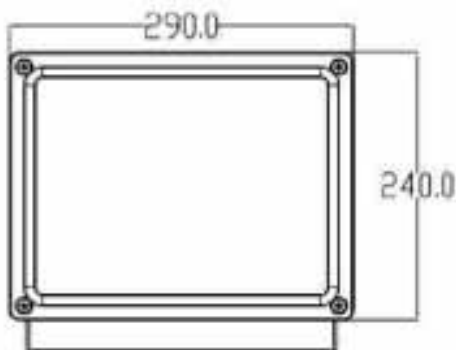
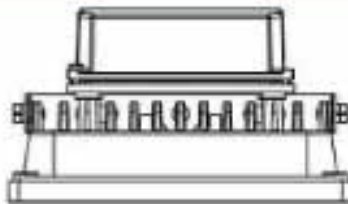
Lifespan: ≥50,000H

Material: Aluminum

IP grade : IP65

Humidity:5 ~95% R.H.

Working temperature:-20~55℃



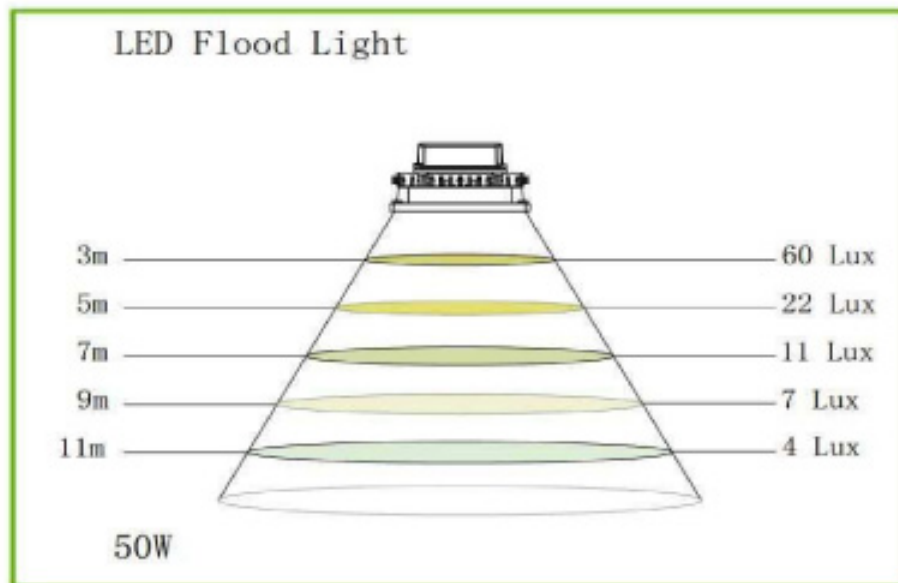
DEMASLED

Storage temperature:-40 ~ 85

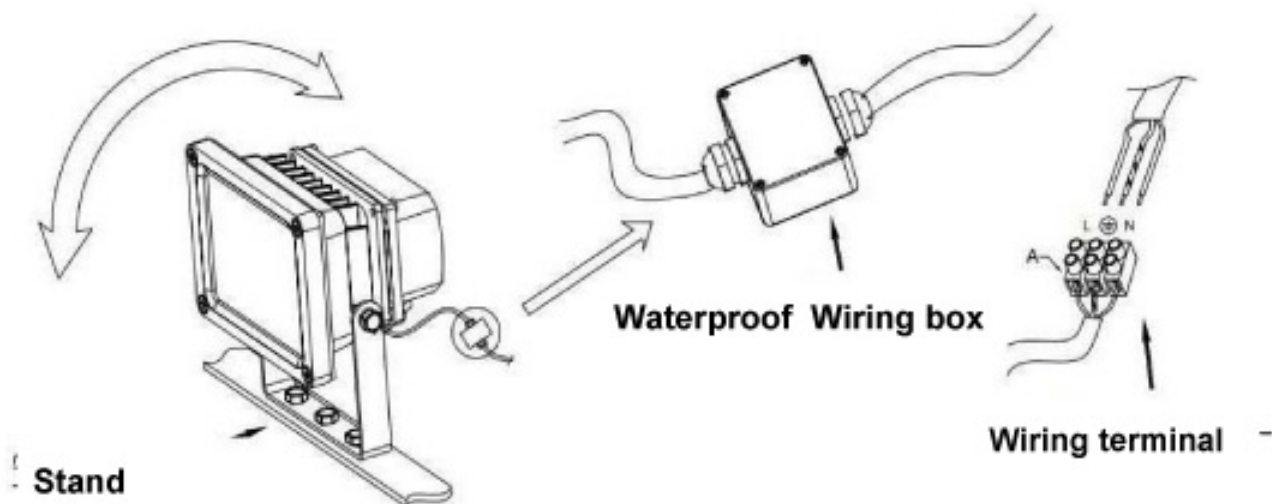
☑ Warranty: 2 year

Model	Power	LED type	Lumen	Wave Length(nm)			Input Voltage	Beam Angle
	50W	COB	4250 lm	620-630	460-470	515-525	AC85-256V	120°

Illumination:

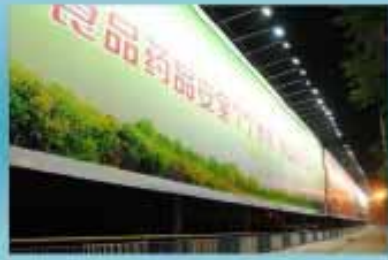


Installation:



DEMASLED

Application:



Installation Instructions:

1. Cut off the power.
2. Check the accessories of the lamp, get installation tools ready.
3. Fixed lamp on stand as the installation pictures show.
4. Put the drive on ceiling or other suitable place.
5. Ensure water proof and moisture proof when outdoor use, waterproof junction box is suggested when wires connected, please refer to the installation pictures.
6. Adjust angle and fix, connect to the power after checking without problem.

Notice:

For safe, please ask professionals to install, repair and check. Operate by Non-professionals is dangerous.
Should use with specified driver.

For fixtures safety, please don't install them on high temperature and damp places. At least 75mm ventilation space will be asked for cooling.

Uncover with insulation blanket and other similar things all the time.

Please notice the glasses when install and dismantle.

Warning



Please don't disassemble the products by yourself, LEDs and other fittings may be destroyed.

Be careful, electric may threat your life, if touching the AC power end on energized condition.

For lifespan and effect of lamps, pull wires hardly is forbidden. For safety of LEDs, collision is forbidden.